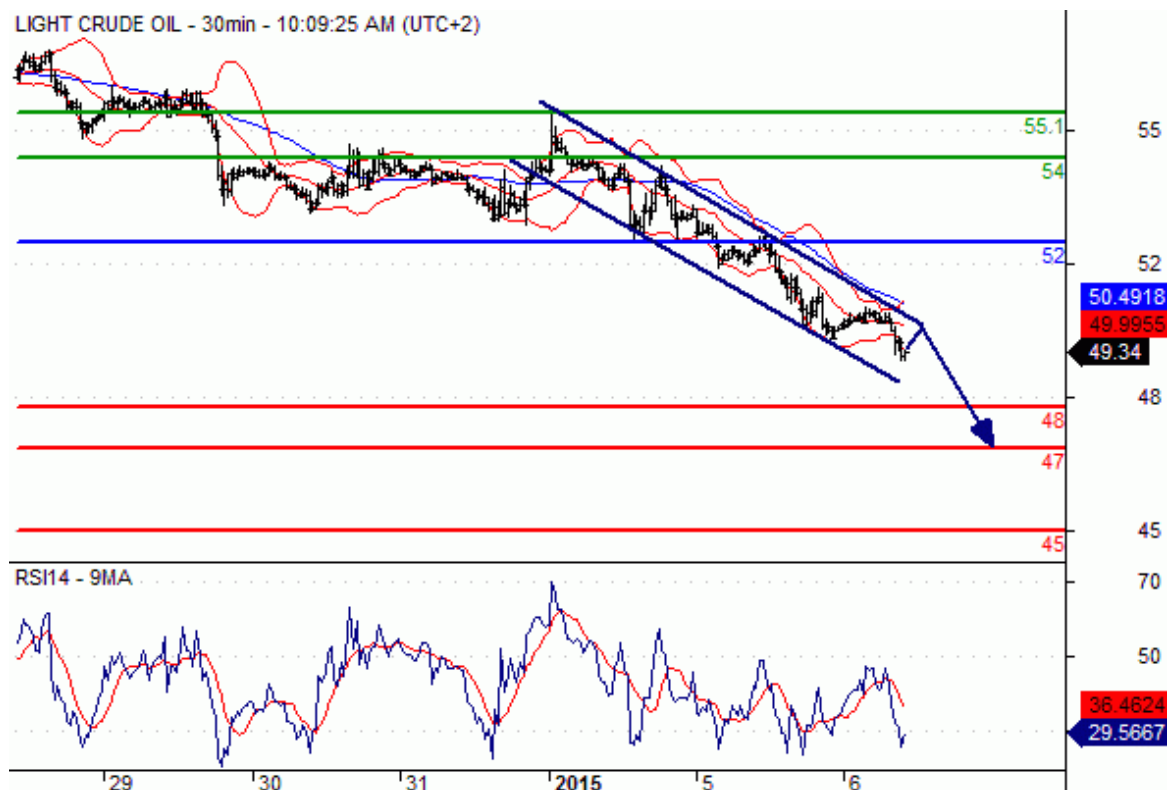


[text] **Crude Oil (NYMEX) (G5) Intraday: the downside prevails.**

**Crude Oil News and Analysis** Pivot: 52 Most Likely Scenario: Short positions below 52 with targets @ 48 & 47 in extension. Alternative scenario: Above 52 look for further upside with 54 & 55.1 as targets.

Comment: The RSI has broken down its 30 level. **Oil Chart**



[/text]