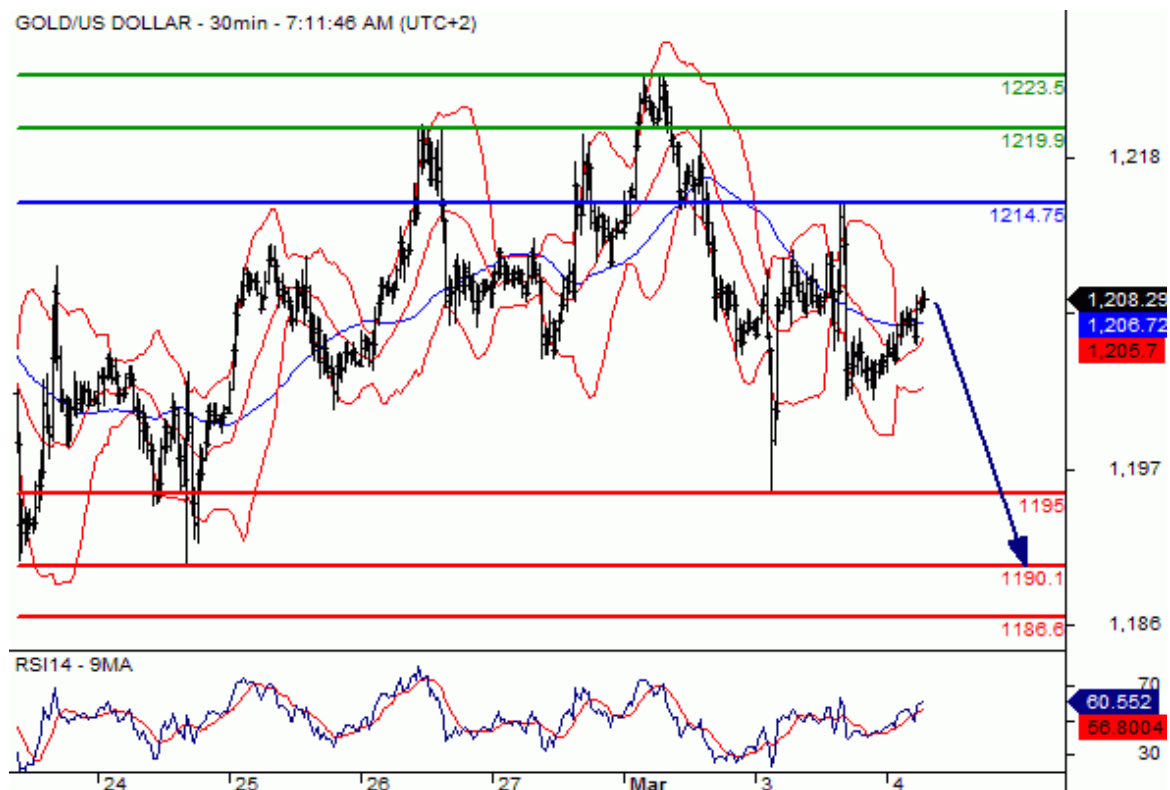


[text] Gold Pivot Point Gold spot Intraday: under pressure. Pivot: 1214.75 Most Likely Scenario: Short positions below 1214.75 with targets @ 1195 & 1190.1 in extension. Alternative scenario: Above 1214.75 look for further upside with 1219.9 & 1223.5 as targets. Comment: As long as 1214.75 is resistance, likely decline to 1195.

Gold Chart



Oil Pivot Pint Crude Oil (NYMEX) (J5) Intraday: further advance. **Pivot: 49.45 Most Likely Scenario:** Long positions above 49.45 with targets @ 51.25 & 52.5 in extension. **Alternative scenario:** Below 49.45 look for further downside with 48.7 & 47.8 as targets. **Comment:** The RSI lacks downward momentum. **Oil Chart**



[/text]