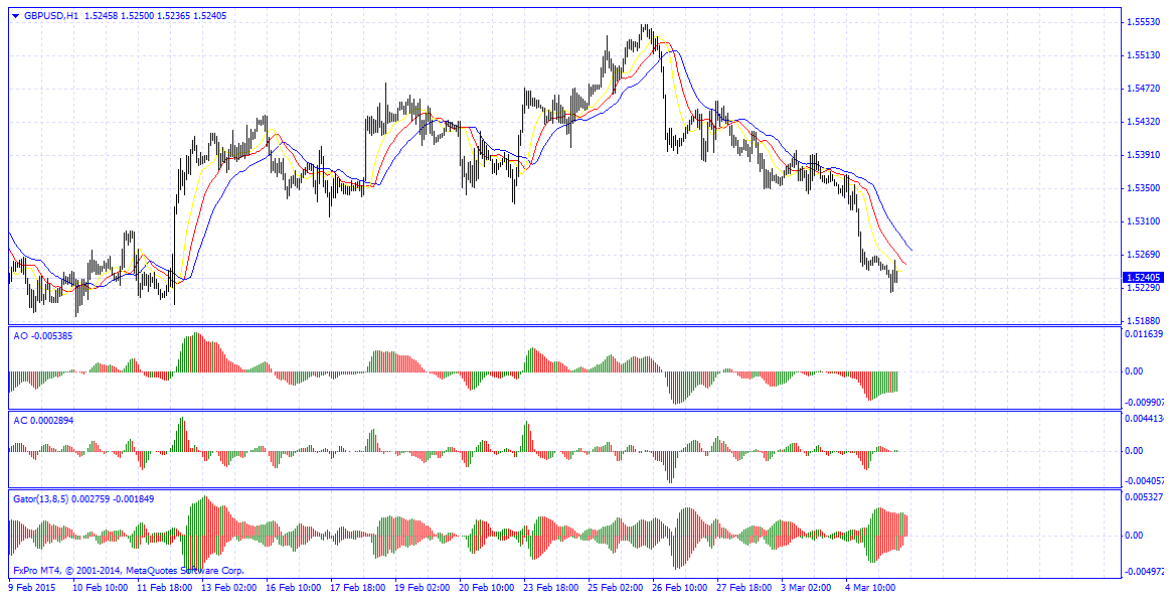


[text] **EUR/USD and GBP/USD Signals cmtrading EUR/USD**

Entry: 1.1040 Strategy: Sell Limit: 1.0985 **Stop Loss: 1.11**

**GBP/USD** Entry: 1.5235 Strategy: Sell Limit: 1.5190 **Stop Loss:**

**1.5275** GBP/USD Chart



[/text]