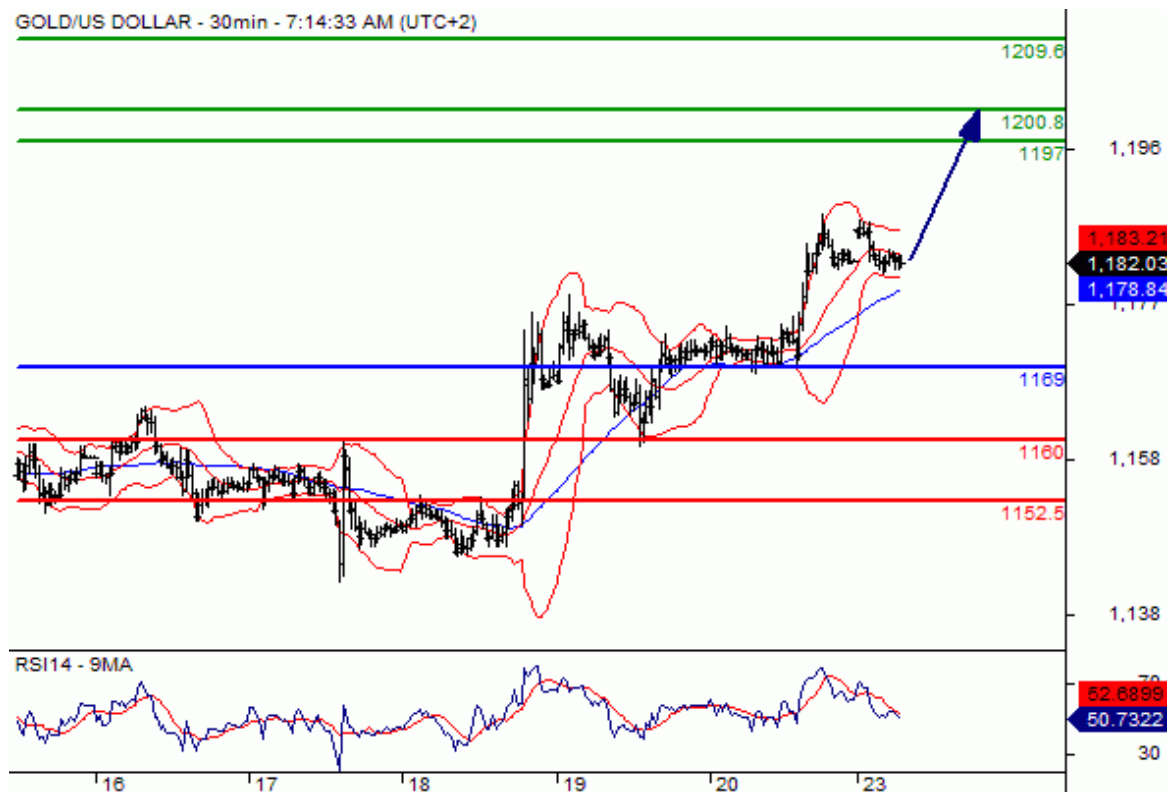


[text] **Gold Analysis** Gold spot Intraday: bullish bias above 1169. Pivot: 1169 Most Likely Scenario: Long positions above 1169 with targets @ 1197 & 1200.8 in extension. Alternative scenario: Below 1169 look for further downside with 1160 & 1152.5 as targets.

Comment: The RSI is mixed. **Gold Chart**



fxpro forex broker [/text]