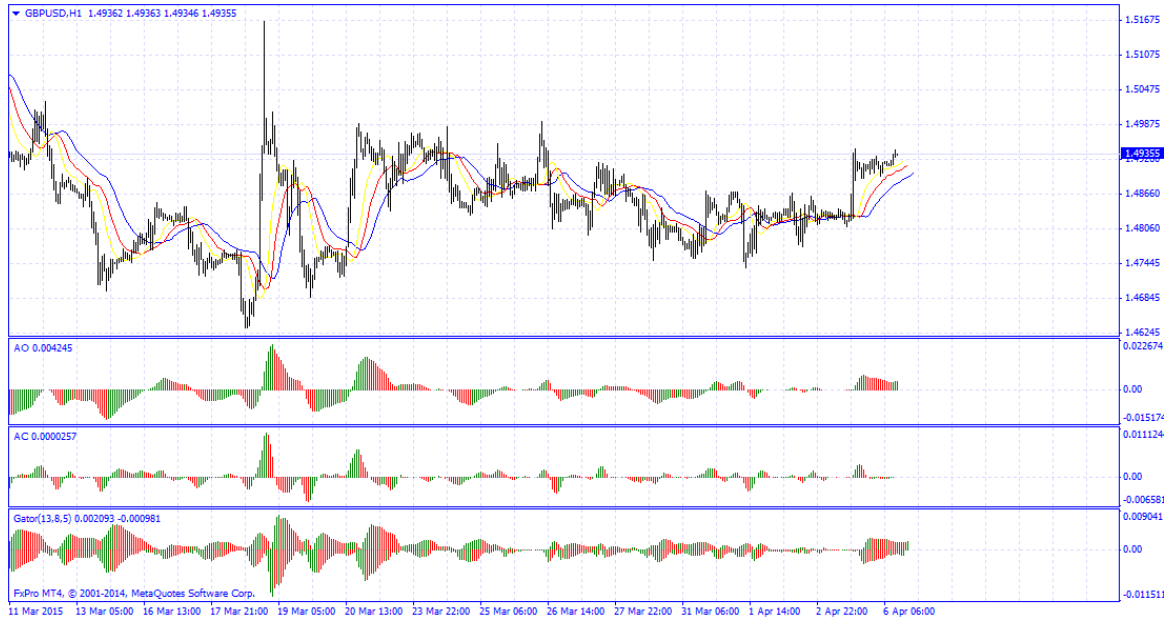


[text] **GBP/USD and USD/JPY Signals Cmtrading GBP/USD**

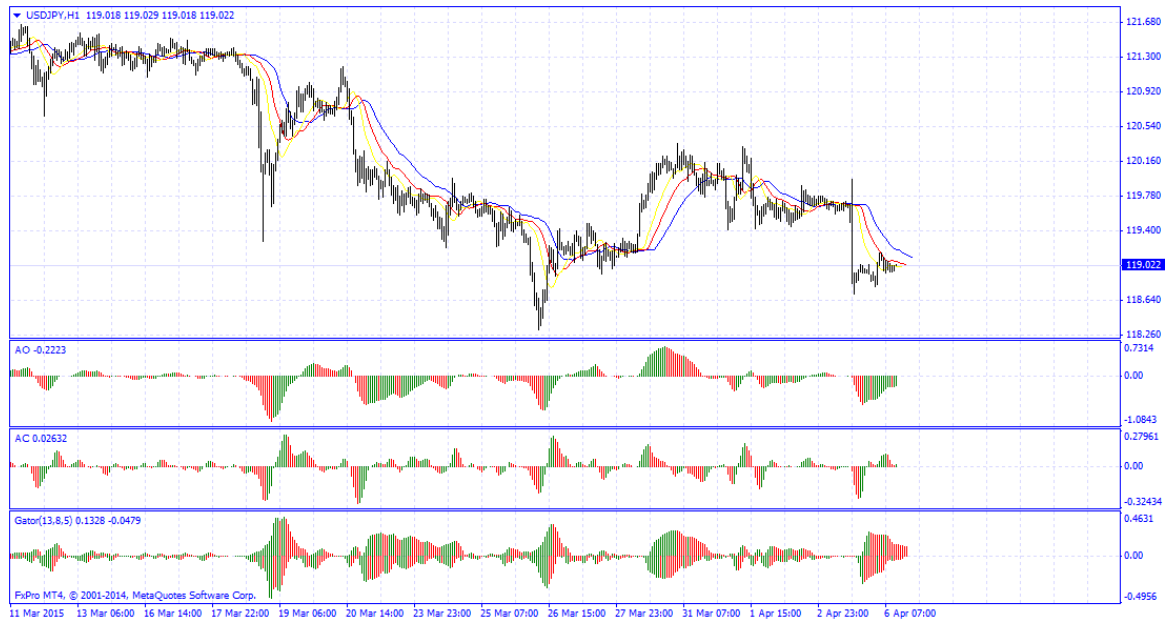
Entry: 1.4920 Strategy: BuY Limit: 1.4975 **Stop Loss: 1.4865**

**USD/JPY** Entry: 119.05 Strategy: Sell Limit: 118.50 **Stop Loss:**

**119.35 GBP/USD Chart**



**USD/JPY Chart**



[/text]