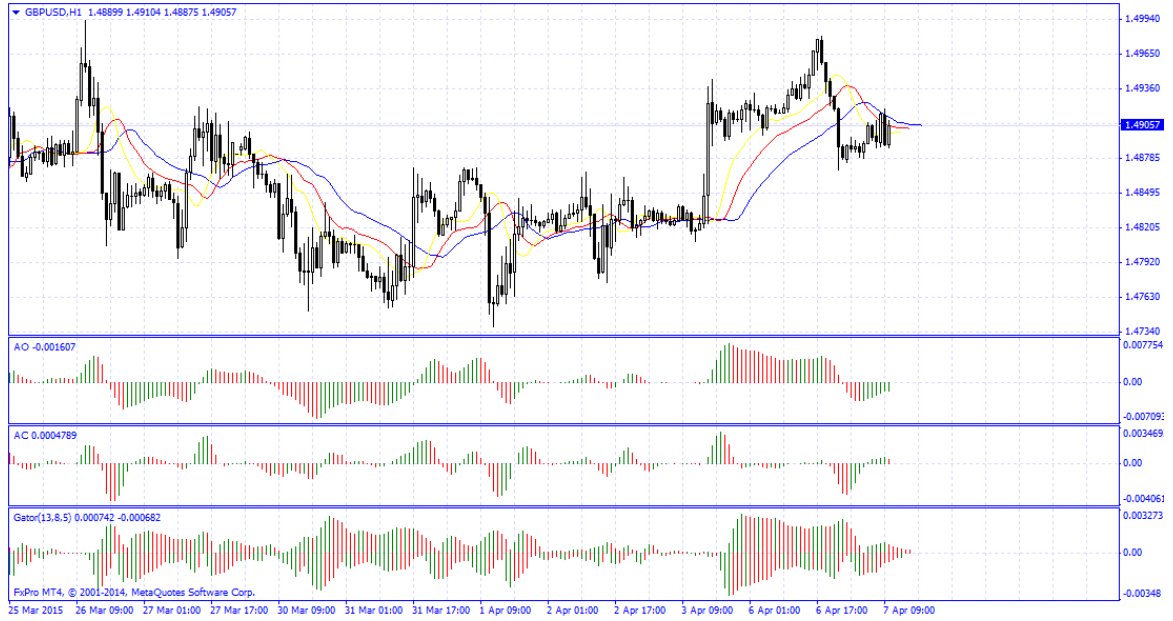
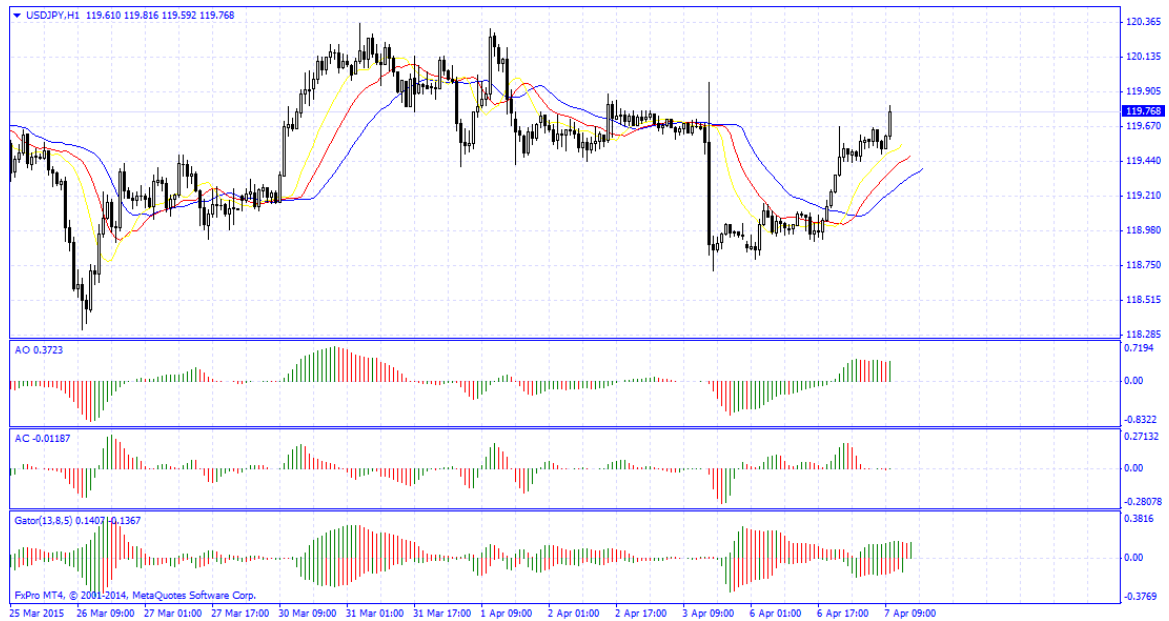


[text] **USD/JPY and GBP/USD Signals cmtrading** **USD/JPY** Entry: 119.50 Strategy: BuY Limit: 118.90 Stop Loss: 120.15 **GBP/USD** Entry: 1.4905 Strategy: BuY Limit: 1.4935 Stop Loss: 1.4870
GBP/USD chart 2015.04.07



USD/JPY Chart 2015.04.07



[/text]