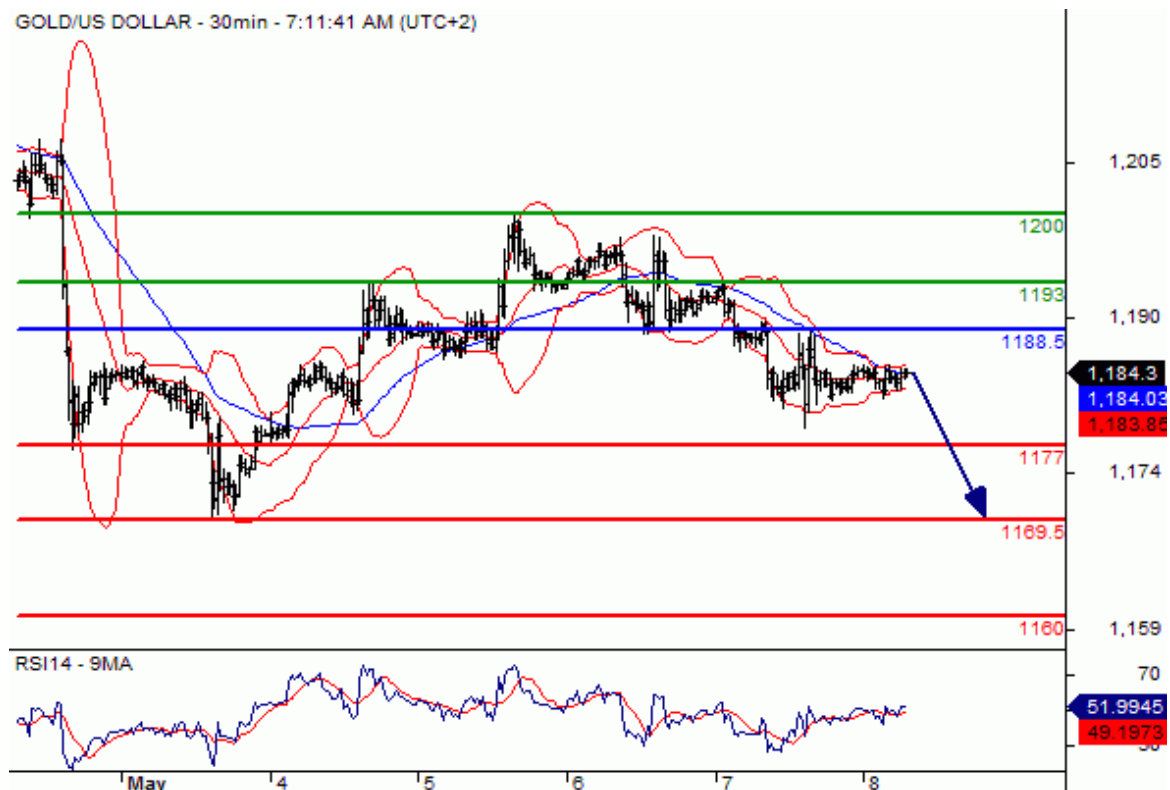


[text] [Gold and Oil Analysis 4 May , 2015](#) Pivot: 1169 Most Likely Scenario: Long positions above 1169 with targets @ 1199 & 1207.5 in extension. Alternative scenario: Below 1169 look for further downside with 1160 & 1153 as targets. Comment: The RSI is mixed to bullish.

Gold Chart



Crude Oil (WTI) (M5) Intraday: further upside. Pivot: 58.3 Most Likely Scenario: Long positions above 58.3 with targets @ 59.9 & 60.5 in extension. **Alternative scenario:** Below 58.3 look for further downside with 57.85 & 57.2 as targets. **Comment:** The RSI is mixed to bullish. [Oil Chart](#)



[/text]