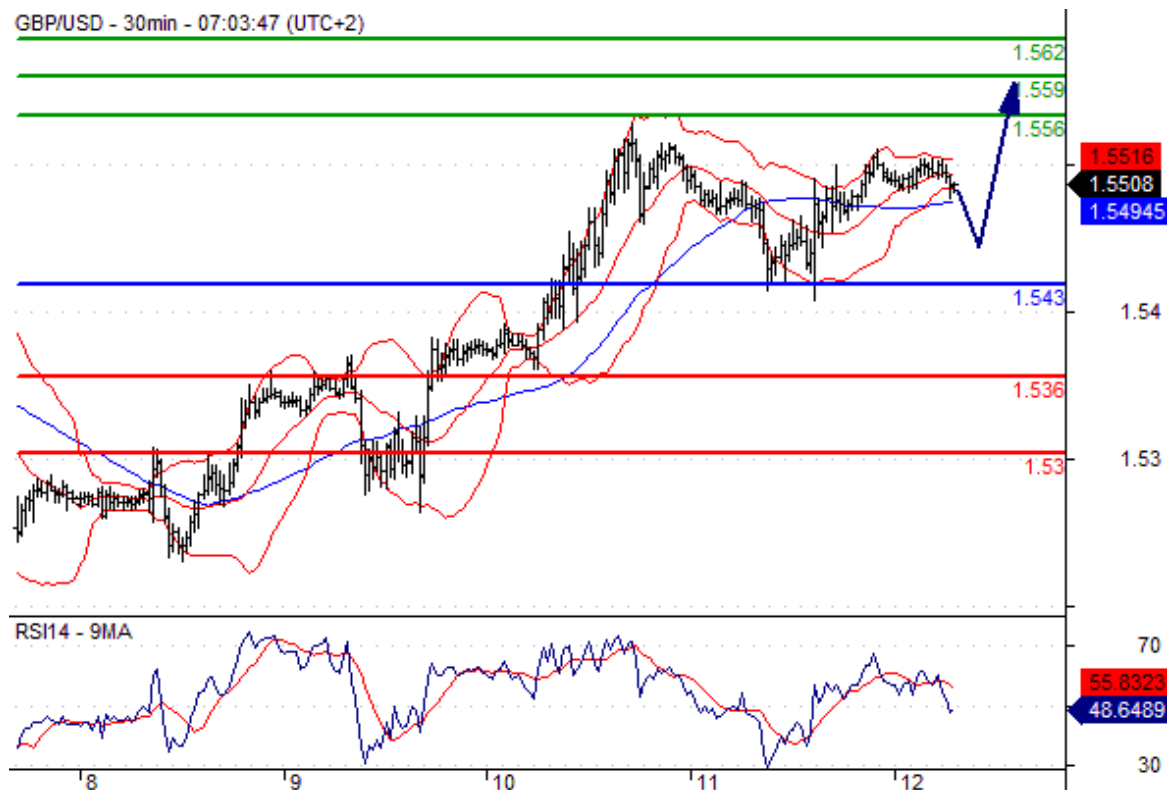


[text] **GBP/USD Analysis 2015.06.12** GBP/USD Intraday: the bias remains bullish. Pivot: 1.543 Most Likely Scenario: Long positions above 1.543 with targets @ 1.556 & 1.559 in extension. Alternative scenario: Below 1.543 look for further downside with 1.536 & 1.53 as targets. Comment: The RSI is mixed to bullish. **GBP/USD Chart**



[/text]