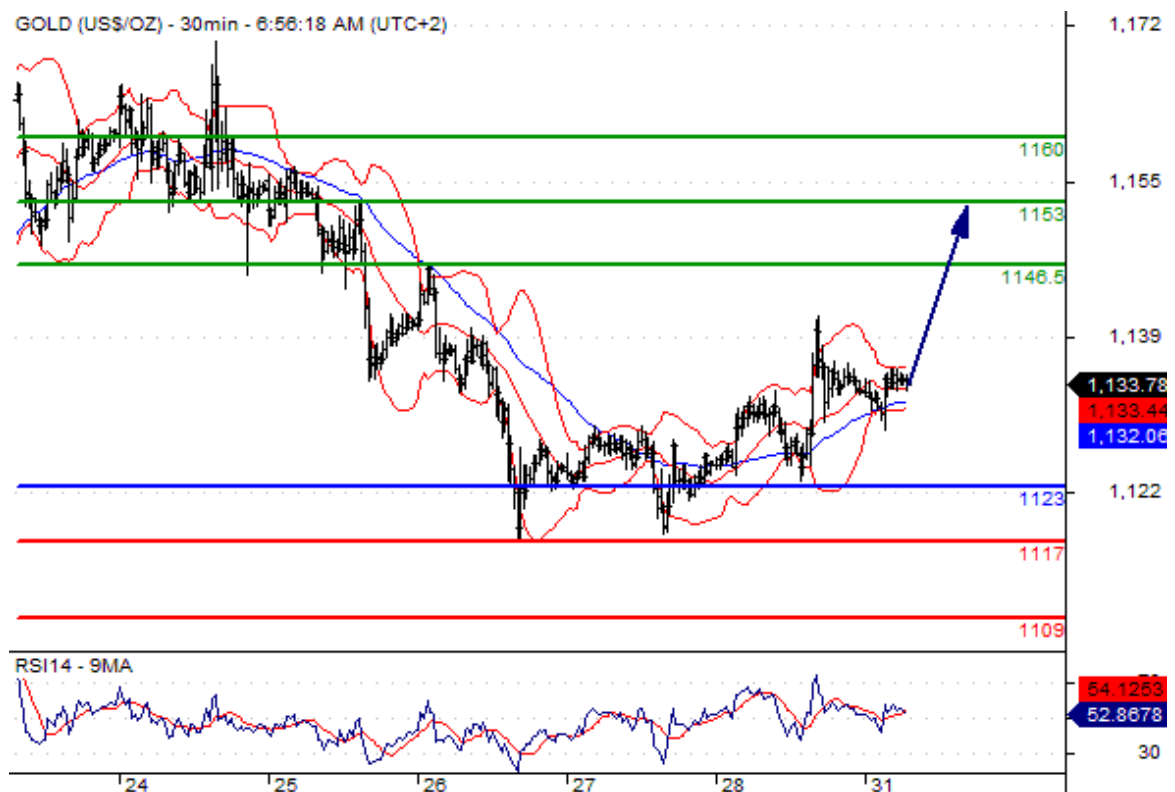


[text] **Source:** [Orbex Forex Broker \(Review and Forex Cashback\)](#)

Pivot: 1123 Our preference: Long positions above 1123 with targets @ 1146.5 & 1153 in extension. Alternative scenario: Below 1123 look for further downside with 1117 & 1109 as targets. Comment: The RSI is mixed with a bullish bias. **Gold Chart**



Pivot: 42.75 Our preference: Long positions above 42.75 with targets @ 46 & 46.9 in extension. **Alternative scenario:** Below 42.75 look for further downside with 41.75 & 40.55 as targets. **Comment:** The RSI has just landed on its neutrality area at 50% and is turning up. **Oil Chart**



[/text]