

Daily Technical Strategies EN - FTSE 100 (NYSE Liffe) (M6)

Intraday: bullish bias above 6190.00. Pivot: 6190.00 Our preference: long positions above 6190.00 with targets @ 6295.00 & 6345.00 in extension. Alternative scenario: below 6190.00 look for further downside with 6155.00 & 6120.00 as targets. Comment: even though a continuation of the consolidation cannot be ruled out, its extent should be limited.

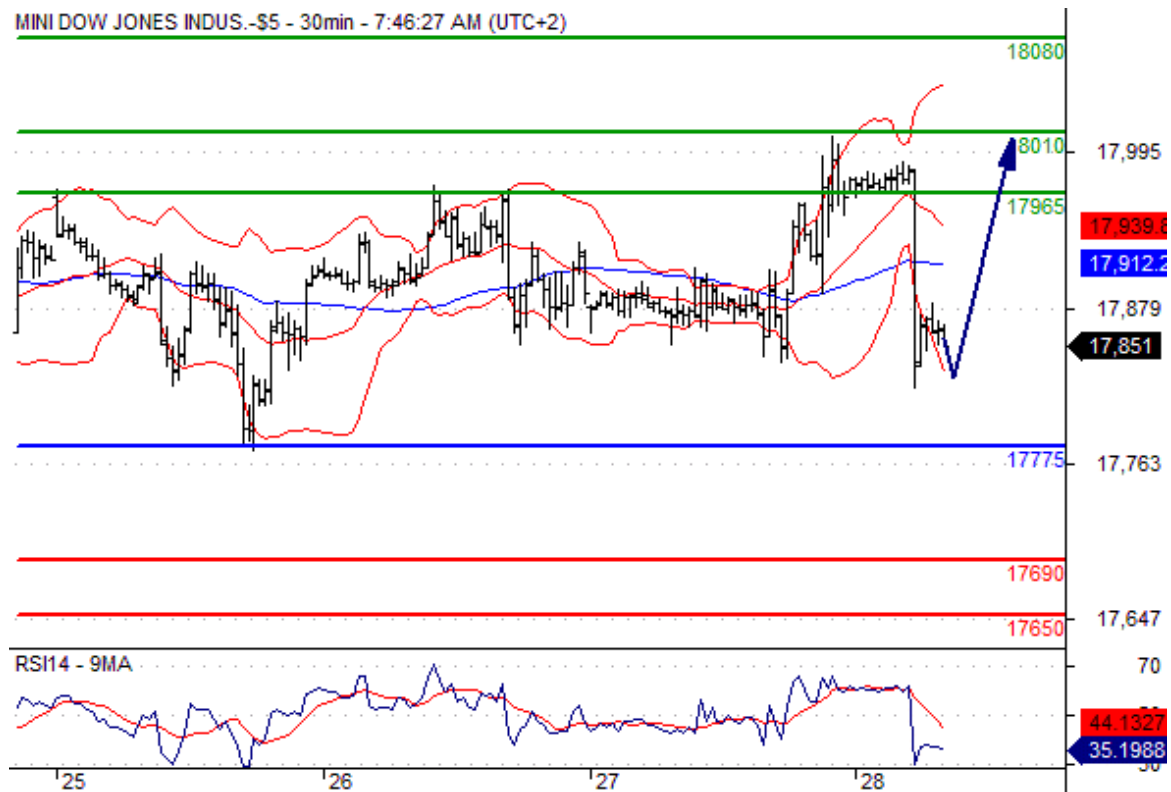


Dax (Eurex) (M6) Intraday: bullish bias above 10240.00. Pivot: 10240.00 Our preference: long positions above 10240.00 with targets @ 10450.00 & 10520.00 in extension. Alternative scenario: below 10240.00 look for further downside with 10180.00 & 10100.00 as targets. Comment: even though a continuation of the consolidation

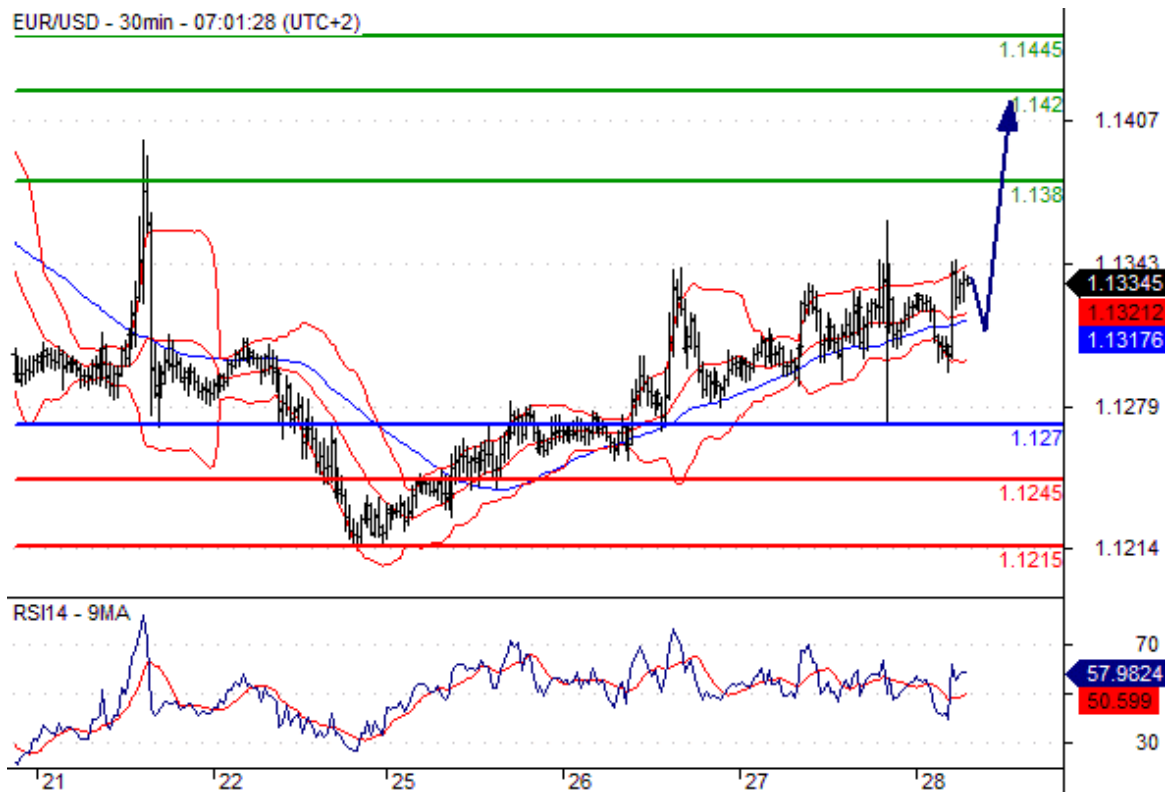
cannot be ruled out, its extent should be limited.



Dow Jones (CME) (M6) Intraday: limited upside. Pivot: 17775.00 Our preference: long positions above 17775.00 with targets @ 17965.00 & 18010.00 in extension. Alternative scenario: below 17775.00 look for further downside with 17690.00 & 17650.00 as targets. Comment: the RSI is mixed and calls for caution.



EUR/USD Intraday: the upside prevails. Pivot: 1.1270 Our preference: long positions above 1.1270 with targets @ 1.1380 & 1.1420 in extension. Alternative scenario: below 1.1270 look for further downside with 1.1245 & 1.1215 as targets. Comment: the RSI is mixed to bullish.



GBP/USD Intraday: rebound. Pivot: 1.4520 Our preference: long positions above 1.4520 with targets @ 1.4585 & 1.4640 in extension. Alternative scenario: below 1.4520 look for further downside with 1.4465 & 1.4410 as targets. Comment: the RSI is mixed to bullish.



Source: [ETX Capital Broker \(Review and Forex Rebate Up to 85%\)](#)