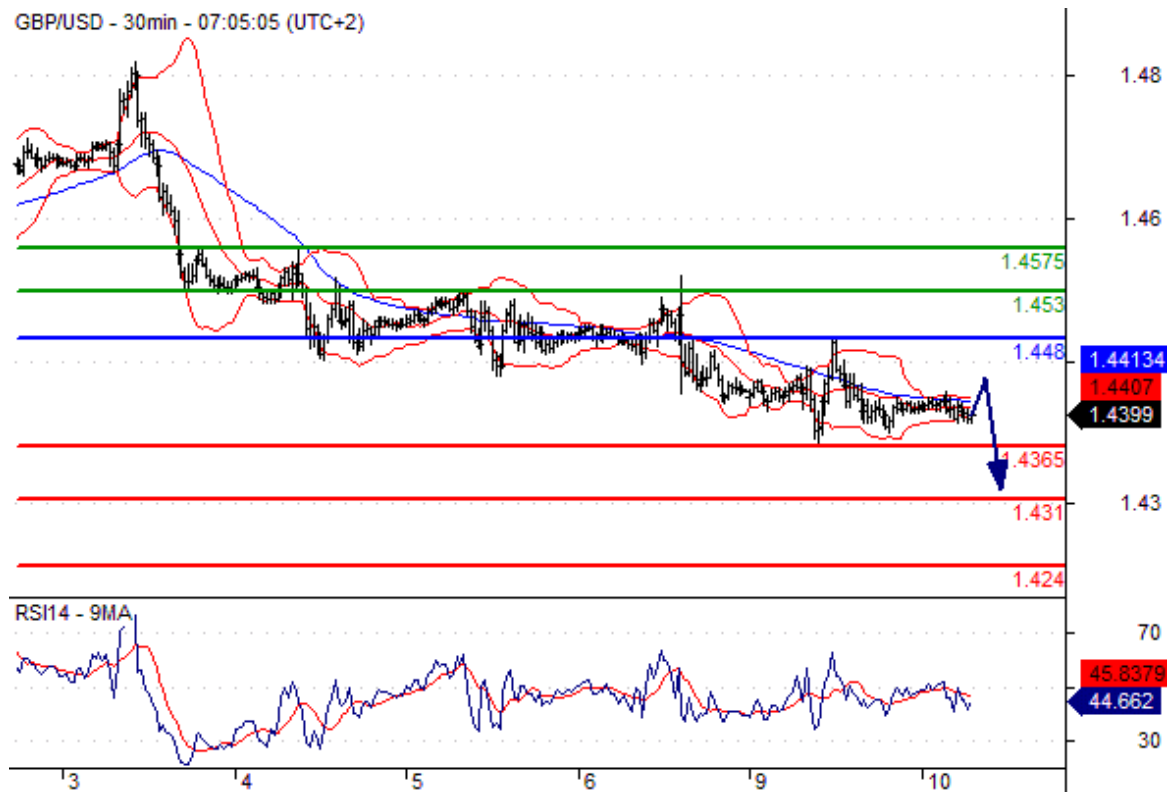


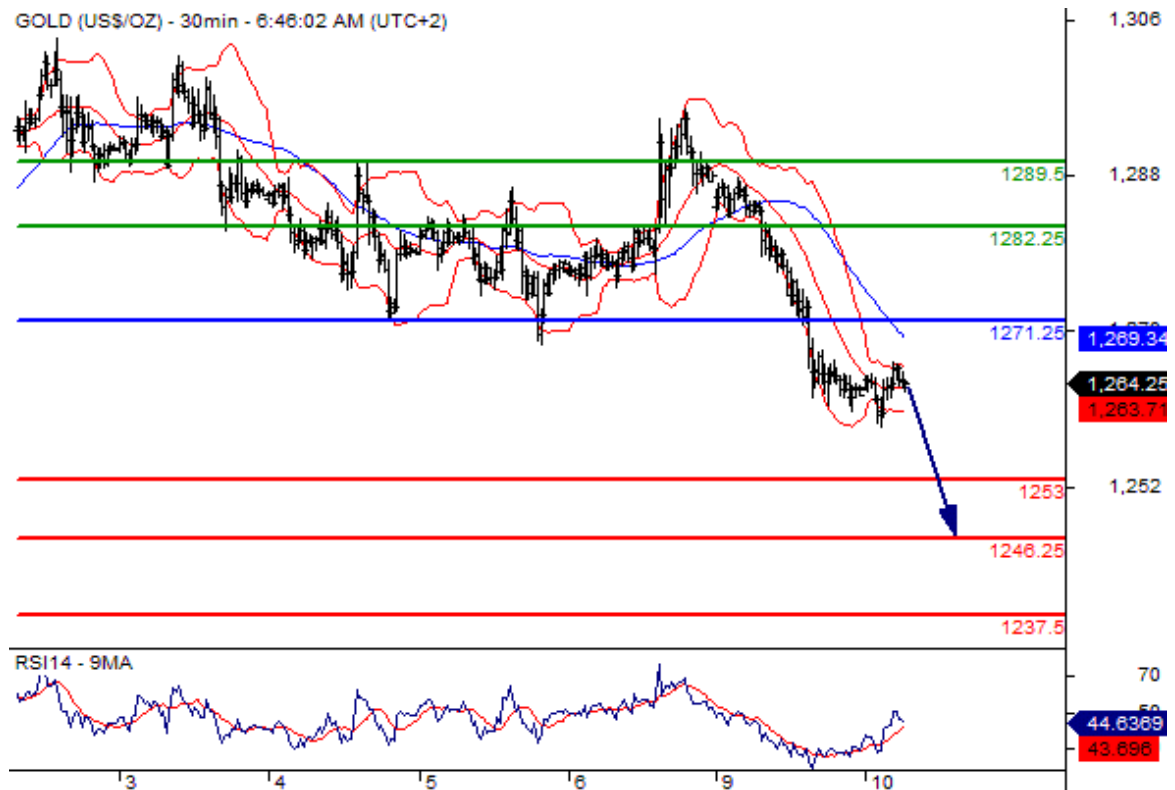
Pivot Point Levels - EUR/USD Intraday: under pressure. Pivot: 1.1445 Our preference: short positions below 1.1445 with targets @ 1.1340 & 1.1310 in extension. Alternative scenario: above 1.1445 look for further upside with 1.1480 & 1.1510 as targets. Comment: the RSI is mixed to bearish. EUR/USD Chart Pivot Point Levels



GBP/USD Intraday: under pressure. Pivot: 1.4480 Our preference: short positions below 1.4480 with targets @ 1.4365 & 1.4310 in extension. Alternative scenario: above 1.4480 look for further upside with 1.4530 & 1.4575 as targets. Comment: the RSI is mixed to bearish. GBP/USD Chart



Gold spot Intraday: key resistance at 1271.25. Pivot: 1271.25 Our preference: short positions below 1271.25 with targets @ 1253.00 & 1246.25 in extension. Alternative scenario: above 1271.25 look for further upside with 1282.25 & 1289.50 as targets. Comment: the RSI is mixed with a bearish bias. Gold Chart



Source: [ETX Capital Broker \(Review and Forex Rebates Up to 85%\)](#)

About ETX Capital

ETX Capital offers Dark Pools, Algo trading, VWAP and TWAP and Stop Losses. The firm has direct access to market makers throughout the UK whilst also trading on the RSPs with Market Makers, ensuring our clients have access to the most competitive prices.

Licenses and Regulations

Monecor (London) Ltd is a member firm of the London Stock Exchange. Authorised and regulated by the Financial Conduct Authority with Financial Services register number 124721.